



KS Natural Resources Pte. Ltd.
Corporate Social Responsibility

A close-up photograph of a group of diverse children in school uniforms, smiling and posing for the camera. The children are of various ethnicities and are wearing light blue shirts. One child in the foreground is wearing glasses and making a peace sign. Another child on the right is wearing a camouflage hat. The background is slightly blurred, showing more children and an outdoor setting.

Our promise for a better
tomorrow

Corporate Social Responsibility

KSNR believes that a business is not only responsible for its operations and business results but also for the impact it has on its direct and indirect stakeholders. We engage with customers, suppliers, partners, locals, governments and many other entities while doing business. All of them enable our business in one way or the other. We realize that with the wherewithal we have we can make a positive difference to those around us. For us, Corporate Social Responsibility or Corporate Citizenship is about extending what we do best – creating long-term value.

We do not limit our Corporate Citizenship to special initiatives and programs but instil it in the way we do business. Hence, in very aspect of our operations, we try to balance our interests with those of the communities we operate in. Our approach to CSR is sculpted by the core values of our business.

CORE VALUES



Integrity

We do not compromise on ethics whether in doing business or in dealing with internal stakeholders. We do not compromise on unethical matters to further our own interests nor do we assist anyone to violate law or behave unethically. Fairness, transparency and respect for law to all are the three pillars of our integrity.



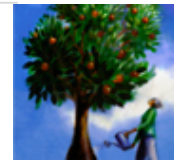
Fairness – We protect the interests of all stakeholders and take decisions that increase long-term value for all.

Transparency – All important decisions and dealings are communicated to relevant stakeholders regularly. Our internal and external communication is honest, timely and unambiguous.

Respect for law – We honour and obey the law of the land in which we operate.

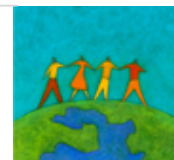
Environmental Concern

Being an agriculture based company, we believe that we have an additional responsibility towards nature. In acquiring and developing our plantations, we are finding ways to maintain and restore the ecological balance in areas where we operate. Our palm plantations are developed in a sustainable way to protect forests, conserve water and improve energy efficiency.



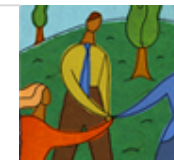
People Welfare

Our people are our true assets and we treat them with dignity. We respect each employee for his professional skills and his personal diversity. We promote the overall welfare of our employees through merit-based promotions and employee well-being initiatives.



Giving Back to Community

We pursue equitable and sustainable growth by promoting welfare of the communities we operate in. Through creating local employment, education and health facilities we strive to make a positive difference to the lives of people around us.



Blending Business and Sustainability



Fillip to Local Employment

KSNR has consciously decided to invest in green and brown field projects so as to deliver greater value to locals. KSNR has made a long-term commitment to the region. By opting to develop green and brown field projects only, KSNR is involving locals at every step of the project, from growing seedlings, planting, to harvesting and crushing the fruits.

KSNR plans to develop a diversified portfolio of products and assets in long term - plantations, palm oil mills, palm oil refineries, palm kernel crushing plants, soap plants, margarine plants and oleo chemical plants. Through this integrated plantation model, we plan to increase local employment and boost ancillary industries.

Land Selection – Preserving the environment, addressing local concerns

We operate in an environmentally sensitive region. We understand the importance of maintaining the ecological balance of the region. For our plantations, we access land from the government under a national scheme of redeveloping waste, unused and unproductive land. Thus, the land that is left behind by loggers, abandoned forests, land left vacant after migration of locals is being reclaimed for plantation. Even when acquiring land from local farmers, KSNR ensures that the land is of no commercial use to them. Often farmers have old rubber plantations, which no longer yield fruit. By acquiring such land, we allow locals to become a part of our growth story. As a strict policy, we do not touch protected and conservation areas such as rain forests.

Often the land acquired from the government or locals houses the village school or other facilities. KSNR not only develops that land without demolishing the local structures but also develops them further.

Supporting the Indonesian Government's Plasma Scheme

The Indonesian Government encourages oil palm plantation companies to develop new plantations that will be eventually operated by local small landholders. This form of assistance to local small landholders is known as a "Plasma Scheme". The Plasma Scheme is designed to develop oil palm plantations for small landholders by big plantation developers. Once developed, the plasma plantations are transferred to the small landholders who then operate the plasma plantations under the supervision of the developer.

Under a Plasma Scheme, plantation developers can acquire land from locals in return of a commitment to purchase Fresh Fruit Branches (FFB's) from the local small landholders at formula prices set by the government, less the costs incurred by the developer in processing and selling the FFB. KSNR has acquired some portion of its land through the Plasma Scheme and has guaranteed to buy back the produce from the farmers at government determined rates. By participating in the Plasma Scheme, KSNR is creating a development agenda around the livelihood of the locals while ensuring a secured supply of produce.

Sustainable Plantations

We do not acquire High Conservation Value Forest (HCVF) land for plantations. Our land acquisition follows government rules. Apart from studying the land for feasibility and productivity, we also carry out an environmental impact study of the land.

Our plantations follow best practices in water and soil management and energy conservation. We value the biodiversity of the local flora and fauna and adopt appropriate practices to protect them. We take inputs from locals and authorities for conserving and enhancing the biodiversity in and around our plantations.

We have partnered with the National University of Singapore (NUS) for R&D on soil feasibility, productivity and sustainability measures.

People and Community Welfare

We obey the country's law on employment, benefits and child labour. Through training, fair remuneration, additional benefits and workplace safety measures, we take care of the well-being of our employees.

We foster close ties with the local communities by involving them in every step of plantation development and environmental conservation. We respect their local culture and attempt to gain an understanding of their lifestyle and needs. Through a continuous dialogue with the locals and local authorities we devise educational, medical, social and environment related initiatives that are relevant to communities.

Right from land selection to plantation development, at every stage we ensure that the rights and natural balance of the local communities are respected and maintained.

The Way Forward

The benefits of ensuring sustainable development or responsible growth are for all – the company, its stakeholders, communities and governments. Equitable and green growth leads to harmony amongst different entities of a social and environmental complex.

KSNR's approach to sustainability, though in its nascent stage, is already showing the positive impact it has made on communities and in the goodwill capital for the company. While locals usually view foreign plantation owners with suspicion, KSNR is being regarded as a company with values and vision. KSNR's emphasis on greenfield and brownfield projects, sensitivity in land acquisition, and support to government initiatives has effected cooperation from locals as well as government authorities.

We believe that KSNR's sustainability is dependent on the sustainability of all those we impact.



Singapore

KS Natural Resources Pte. Ltd.

6 , Battery Road
16-06 , Singapore - 049909

Tel : + 65 63233978 , 63231160 , 63233973

Fax : + 65 63230021

Indonesia

KS Natural Resources Pte. Ltd.

Wisma GKBI fl.38 suite 3830,
Jend. Sudirman No.28,
Jakarta 10210- Indonesia

Tel : + 021 5799 4025

Fax : + 021 5799 1590